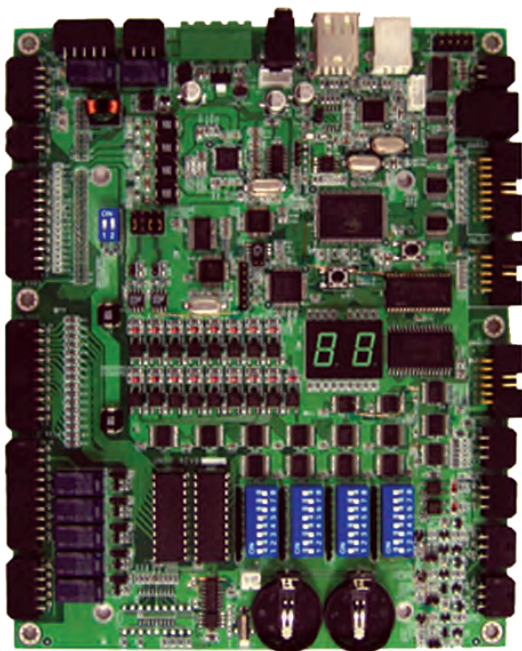


UMiO-6500

Multiple I/O Board

Saving Cost, Design Time and Integration Effort

UMIO-6500



Overview

GZtech USB universal I/O board leverages the " Plug and Play" capability defined in the USB 2.0 bus specification. The board requires one USB interface within the personal computer and provides variant I/O channels. All channels are controlled in a high performance micro controller for simplified communication access through USB interface.

UMIO-6500C



Ordering Information

ITEM	CONTENT
UMIO-6500C	UMIO evaluation kit
UMIO-6500	Universal mutil-I/O module



Specification Highlight

ITEM	CONTENT
MCU	High performance MCU
RTC	High precision real time clock
EEPROM	8 pins socket, I2C serial EEPROM interface
NVRAM	Battery backup 512K Bytes SRAM
WatchDogTimer	Hardware watch dog timer
Host Interface	USB function 2.0 high speed 480Mbps
USB Expansion	USB host 2.0 high speed 480Mbps
Coin Mechanism	cc-talk, HII and coin-pulse
HOPPER	cc-talk
HOPPER Empty	12V internal pull-up empty detection interface
Bill Validator	Supports HII and Buffered RX/TX interface
Counter	Supports SEC meters and OEM meters
iButton	Dallas 1-wired interface
Security Access	Battery backup chassis open detection with time stamp
COM	Standard RS-232/485 with 9bit protocol
Power COM	RX/TX/RTS/CTS with 24V power supplier
I2C interface	SDA/SCL(Optional)
Isolation DI	3KV isolated digital input, 5V~30V input range, 2ms real-time response
High-Driving DO	12V/24V, 700mA per channel, 10ms response time
Relay output	Type A(N.O.), 24Vdc/500mA per channel
Non-Isolation DI	Buffered TTL digital input, 2ms real-time response
Non-Isolation DO	Buffered TTL digital output
Matrix keyboard	Buffered TTL ROW/COL key scan interface
Speaker Amplifier	Class D amplifier, 4/8Ohm, 20W
DIP-SW	Configuration 32-bits
7-SEG LED	Information display
JAMMA interface	Standard JAMMA cabinet interface included VGA by-pass port
Indicators	Indicator LED on +5V, +12V, and +24V supplies
Power Source	Controllable +12V/2A and +24V/2A power output
Power Requirement	+5V/500mA, +12V/2A and +24V/2A power input
Mechanical	Single 4 layer PCB assembly, 165mm x 205mm
Supported OS	Windows CE/2000/XP/XP embedded and Linux

About GZ TECH

We are member of Microsoft Embedded Partner, has more than 150 years' engineering experiences in Industrial and Gaming Solutions, especially ARM series processors with Windows CE, and Linux support. Our focus is to provide complete system level solutions for the customers to develop reliable and cost effective embedded products such as Industrial controller, HMI, POS, Kiosk, Gaming, Medical and Advertisement solutions.



5F-1, No.94, Baojhong Rd., Sindian City, Taipei 231, Taiwan
 Tel: +886-2-66289688 E-mail: sales@gztech.com.tw
 Fax: +886-2-66288628 http://www.gztech.com.tw